



Designmaster™

FENCING SYSTEM



Building a beautiful world, one fence at a time.



STEEL Fence Solutions

Designmaster is changing the way America fences, with steel-strong industrial, commercial and residential fence and gate solutions for virtually every need, from maximum security to ornamental projects. Our incomparable quality, product diversity, maintenance-free finishes and competitive pricing give you every reason to choose Designmaster, and our customer-centric attention to detail and 25-year limited warranty ensure your satisfaction and peace of mind.



LEED CERTIFIED

We are an active member of the US Green Building Council, the LEED certification regulatory entity for environmentally sustainable building projects.

LEED certification promotes the use of recycled and recyclable goods such as Designmaster Fence, which is manufactured from recycled steel and is a recyclable product, thanks to our advanced technologies and practices.

Designmaster Fence automatically qualifies for LEED credits. Documentation is available upon request.

MIAMI DADE CERTIFIED

The strength and durability of Steel merge with style and elegance to produce a fencing system that is Miami-Dade certified with the highest rating of any Welded Steel Wire Fencing System, High Velocity Hurricane Zone (HVHZ).

Miami-Dade County, Florida, Notice Of Acceptance, file number 15-0903.07, EXP 03/30/2022. Miami-Dade certification is recognized worldwide as the standard for products that can withstand the most severe weather and wind loads.

NON-TOXIC POWDER COATING

The finish on all Designmaster Fence components is 100% free of Volatile Organic Compounds and Triglycidyl Isocyanurate, (both of which are known carcinogens). This makes Designmaster Fence the best choice for public areas, schools, daycare centers, zoos, parks, stadiums and anyplace else where people or animals may contact the fence.

WORLD STEEL ASSOCIATION

Our company is also an accredited and active member of the World Steel Association's climate action chapter. This is due to our strict energy consumption standards, extensive water recycling policy and near-zero particulate emissions, which minimizes the carbon footprint of all our manufacturing and production facilities.

03 STEEL FENCE SOLUTIONS

04 SYSTEM BASICS

05 APPLICATIONS

06 CLASSIC

08 CONTEMPO

10 FORTE

12 FLORENCE

14 MILAN

16 CROWD CONTROL

18 INSTALLATIONS



System Basics



Designmaster Fence is an advanced fencing system that combines beauty, functionality, safety, durability and strength.

CHARACTERISTICS

The Designmaster Fence system includes panels, posts, gates and all other accessories including hardware and fixtures. Metal components are galvanized, treated with phosphate, and powder coated, providing maximum protection against corrosion.

NON-TOXIC POWDER COATING

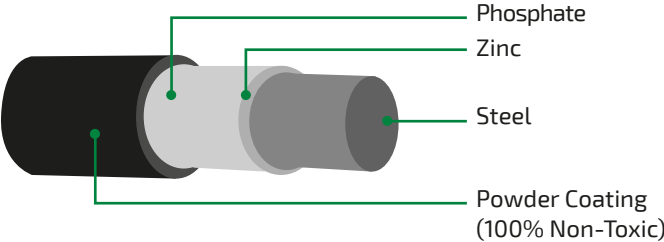
The finish on all Designmaster Fence components is 100% free of Volatile Organic Compounds and Triglycidyl Isocyanurate, (both of which are known carcinogens). This makes Designmaster Fence the best choice for public areas, schools, daycare centers, zoos, parks, stadiums and anyplace else where people or animals may contact the fence.

STANDARDS

Complies with ASTM-510 and passes the Accelerated UV Weather Test G154-04 and Corrosion resistance of 1,000 hours of exposure. Fabricated in accordance with NF-EN. 10016-2 steel standards.

ADVANTAGES

- Aesthetically pleasing and blends in the surroundings.
- Durability, functionality and ease of installation.
- Much more secure than chain link or aluminum.
- 25 Year Warranty on all products and components.
- Miami-Dade certified and qualifies for LEED credits.
- The look of wrought iron without the cost or maintenance.
- Great for Schools, Public Works, Business and Residential.
- Eco-Friendly; recycled and recyclable; 100% Non-Toxic finish.
- A complete fencing package.



Applications

The chart below will help determine which Designmaster Fence system is best for your project:

APPLICATION	CLASSIC	MILAN	FLORENCE	CONTEMPO	FORTE
Amusement Parks	•••	•••	••	••	•
Shopping Plazas	•••	••	•	•••	•
Corporate Offices	••	•••	•••	••	•
Governmental Offices	••	•	••	•••	•••
Hotels	••	•••	•••	••	•
Industrial Areas	•••	•	•	•••	••
Military Zones	••	•	•	•••	•••
Parking Lots	•••	••	•	•••	••
Parks	•••	••	•••	•	•
Playgrounds	••	•••	••	•••	•
Pools	•••	••	•	•••	•
Prisons	•	•	•	•••	•••
Residential Areas	••	•••	•••	•	•
Commercial Spaces	•••	••	•	•••	•
Schools and Universities	•••	••	••	•••	•
Sports Complexes	•••	•	•	•••	••
Vineyards	•••	•••	••	•	•
Storage and Distribution Centers	••	•	•	•••	•••
Zoos	••	••	•	•••	•••

••• Ideal application •• Recommended application • Acceptable application



CLASSIC

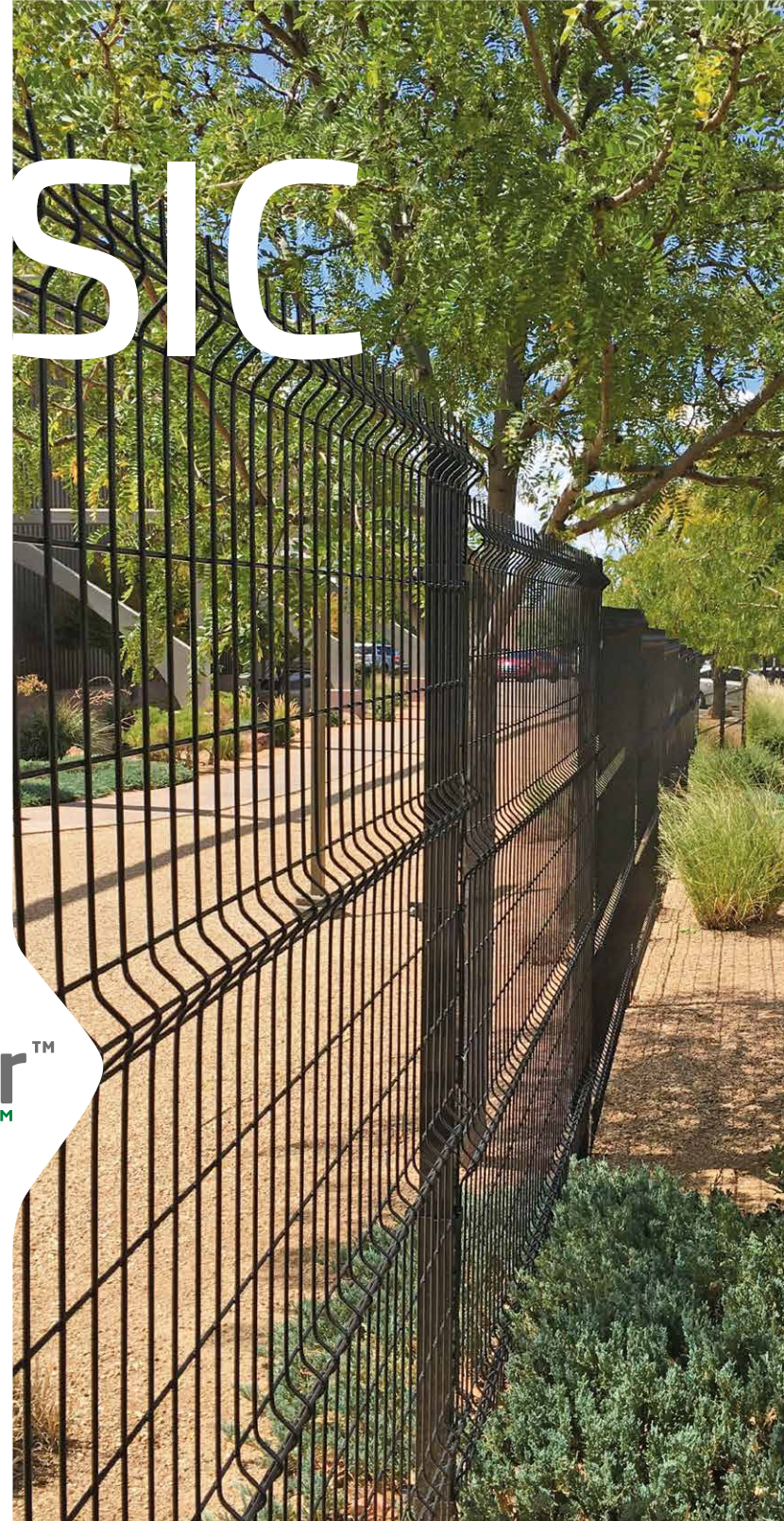
Clearly built for timeless beauty & strength.



CLEAR see-through design

TIMELESS classic beauty

STRENGTH for mid-level security



When beauty factors into perimeter security, Classic's stately elegance is an incomparable choice. Difficult to climb or penetrate, made to last and competitively priced, Classic's v-shaped braces along the length of each steel panel add lateral strength, and its adaptability to elevation and directional changes (120° swing) make this fence ideal for nearly any application.



Security Rating: MEDIUM

SECURITY SOLUTIONS

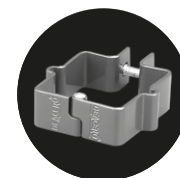
- Public Works / Public Spaces
- Businesses & Corporations
- Schools & Universities
- Amusement Parks
- Daycare Centers
- Sports Complexes
- Botanical Gardens & Zoos
- Parks, Playgrounds & Pools
- Places of Worship
- Apartment Complexes
- Hotels & Resorts
- Transportation
- Communities
- Residential Property
- Warehouses
- Distribution Facilities

PANEL

Height	Length	Opening	Steel Bracket	Gauge	Wire Breaking Load	Weld-Shear Strength
in	in	in	#	cal.	psi	lbs
25 3/8	95	2 x 6	2	6	80,000 - 100,000	1,051
48 7/8	95	2 x 6	2	6	80,000 - 100,000	1,051
62 1/16	95	2 x 6	3	6	80,000 - 100,000	1,051
73 5/16	95	2 x 6	4	6	80,000 - 100,000	1,051
97 7/8	95	2 x 6	5	6	80,000 - 100,000	1,051

Posts are available in multiple sizes and lengths.
Available with an angled extension.
Please consult one of our Distributors for additional details.

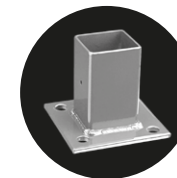
INSTALLATION COMPONENTS



Standard Bracket



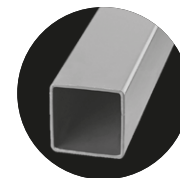
Universal Bracket



Base Mount
(Not recommended for panels over 5' H)



45° Angled Extension

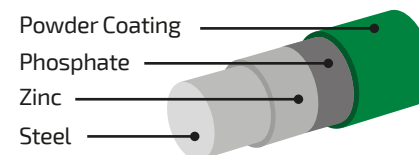


Post



Clamp

COMPOSITION



25-year limited warranty on all components | Meets ASTM-510

COLORS RAL CODES



CONTEMPO

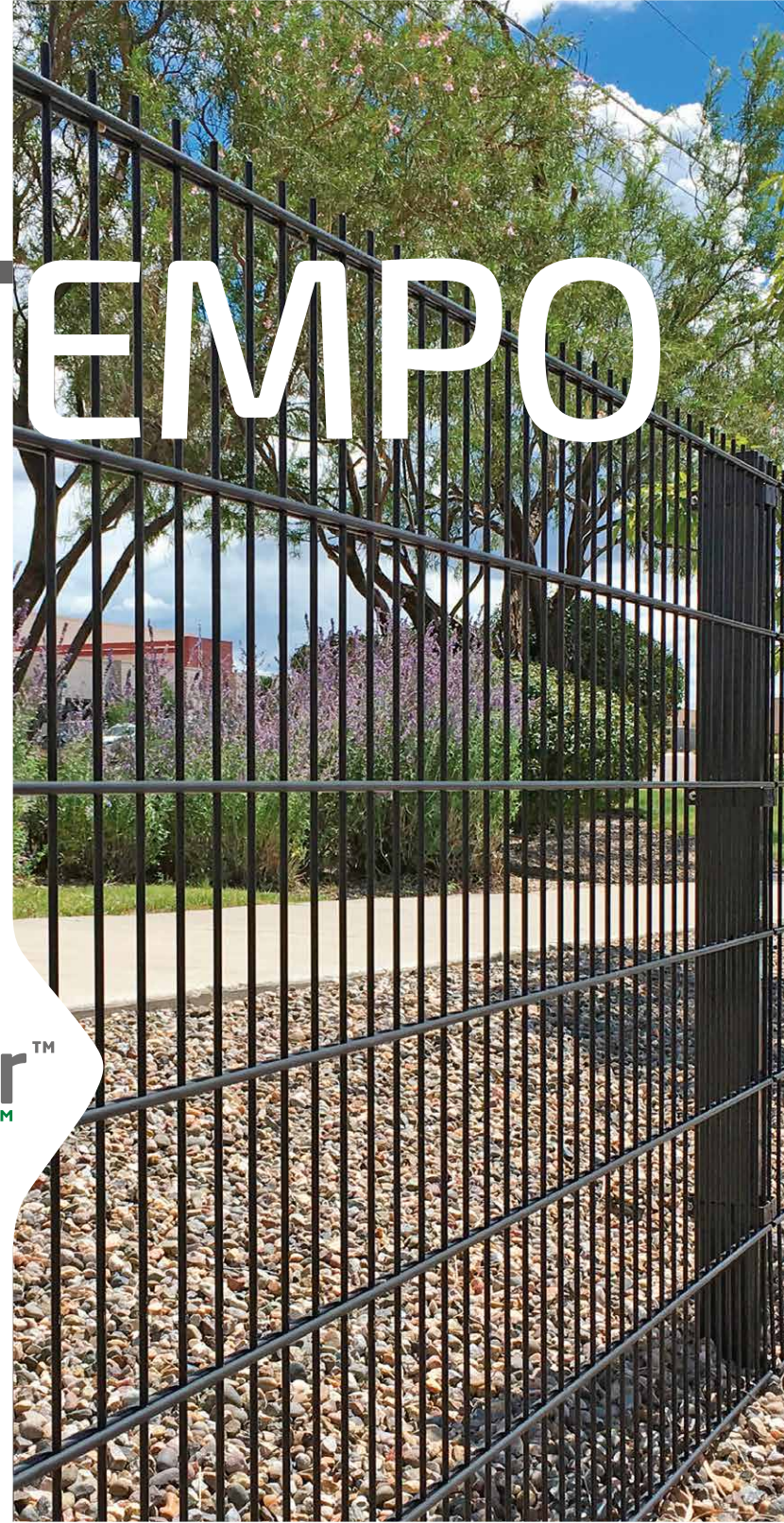
Clearly & simply built strong.



CLEAR see-through security

SIMPLE contemporary design

BUILT STRONG for high-security applications



When security matters, there's Contempo, **designed to meet the toughest security challenges.**

Difficult to climb or penetrate, made to last and competitively priced, Contempo's **4-gauge vertical wires are sandwiched between two 1-gauge horizontal wires, making this fence an exceptional solution for even the highest levels of security, including multi-level and sloped installations.**



Security Rating: HIGH

SECURITY SOLUTIONS

- Military Bases
- Federal & State Buildings
- Municipal Buildings
- Transportation
- Correctional Facilities
- Schools & Universities
- Daycare Centers
- Places of Worship
- Hotels & Resorts
- Apartment Complexes
- Amusement Parks
- Sports Complexes
- Parks, Playgrounds & Pools
- Public Works
- Warehouses
- Distribution Facilities
- Businesses & Corporations
- Communities

PANEL

Design	Height	Length	Opening
	in	in	in
Heavy Duty	48 7/16	95 5/8	2 x 8
	72 1/16	95 5/8	2 x 8
	95 5/8	95 5/8	2 x 8
	120 1/16	98 11/16	2 x 8

VERTICAL WIRE

Design	Breaking Load	Gauge	
		cal.	mm
Heavy Duty	75K - 105K	4	6

DOUBLE HORIZONTAL WIRE

Design	Breaking Load	Gauge	
		cal.	mm
Heavy Duty	75K - 105K	1	8

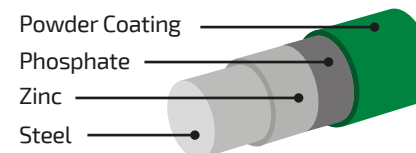
Posts are available in multiple sizes and lengths. Available with an angled extension.

Please consult one of our Distributors for additional details.

INSTALLATION COMPONENTS

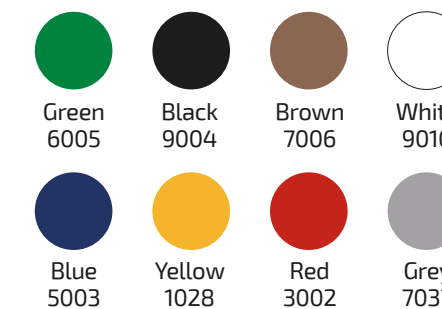


COMPOSITION



25-year limited warranty on all components | Meets ASTM-510

COLORS RAL CODES



FORTE

Clearly tough & secure.



CLEAR see-through security

TOUGH virtually impossible to penetrate or climb

SECURE enough for the highest levels of protection

Go ahead. Compare Forte with other high-security fencing. You'll find **Forte delivers on every point.**

When you need it strong, virtually impenetrable, made to last and competitively priced, choose Forte's **steel flat or v-braced panels, with optional cross bars and reinforcing brackets for maximum security**, including multi-level and slope installations.



Security Rating: **MAXIMUM**

SECURITY SOLUTIONS

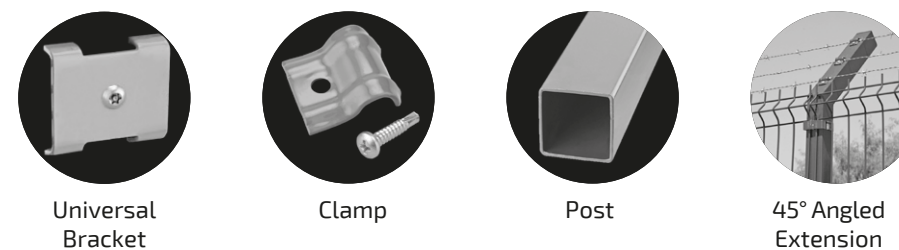
- Critical Infrastructure
- Chemical & Industrial Plants
- Military Bases
- Federal & State Buildings
- Municipal Buildings
- Places of Worship
- Transportation
- Correctional Facilities
- Embassies
- Storage Facilities
- Warehouses
- Distribution Facilities

PANEL

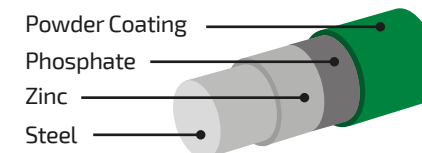
Design	Height	Length	Gauge	Post Height
	in	in	cal.	in
With V-Brace	76 3/4	99 3/16	8	106 5/16
	96 7/8	99 3/16	8	126
Flat	79 3/16	99 3/16	8	106 5/6
	99 1/16	99 3/16	8	126
	99 1/4	99 3/16	8	126
	118 11/16	99 3/16	8	146
	142 1/4	99 3/16	8	170

Wire Breaking Load	Opening	
psi	in	cm
70,000 - 90,000	1/2 X 3	7.62 x 1.27

INSTALLATION COMPONENTS



COMPOSITION



25-year limited warranty on all components | Meets ASTM-510

COLORS RAL CODES



FLORENCE

Clearly designed for elegant perimeters



CLEAR see-through design

ELEGANT lines
no pinch-points

PERIMETERS that make a statement



Sometimes, aesthetics are as important, or more so, than security. And for that, there's Florence's **graceful, arching steel panels, adding elegant security** to all it surrounds.

Difficult to climb, made to last and competitively priced, Florence sets the **standard for beautiful, secure fencing solutions.**



Security Rating: **STANDARD**

SECURITY SOLUTIONS

- Amusement Parks
- Botanical Gardens & Zoos
- Parks & Playgrounds
- Schools & Universities
- Public Spaces
- Hotels & Resorts
- Businesses & Corporations
- Apartment Complexes
- Communities
- Residential Property

PANEL

Height		Length		Gauge	
in	in	cal.	mm		
31 1/2	96 1/16	4	6		
47 1/4	96 1/16	4	6		

Wire Breaking Load	Wire Tension Strength
psi	lbs (min)
55,000 - 70,000	2500

Posts are available in multiple sizes and lengths.
Please consult one of our Distributors for additional details.

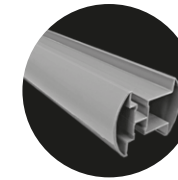
INSTALLATION COMPONENTS



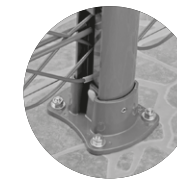
Round Lock Clamp



Single Clamp



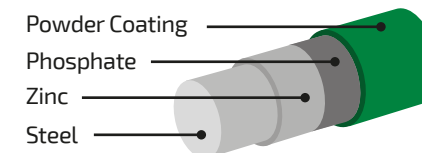
Extruded Aluminum Posts



Base Mount

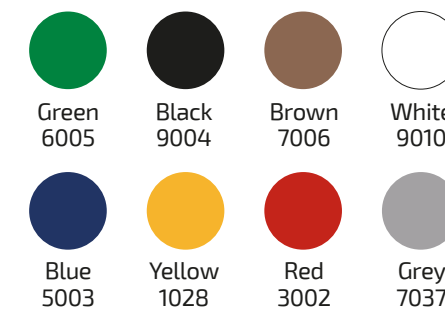


COMPOSITION



25-year limited warranty on all components | Meets ASTM-510

COLORS RAL CODES



MILAN

Clearly a beautiful perimeter solution



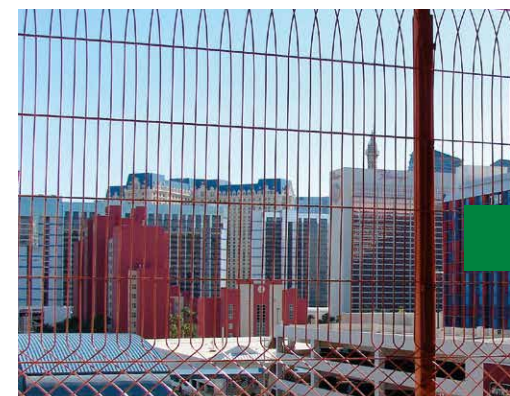
CLEAR see-through design

BEAUTIFUL & SLEEK
no pinch-points

PERIMETER-PERFECT
aesthetics & security

For solutions that demand equal parts beauty and security, choose Milan's **steel panels, topped with horizontally-reinforced sleek arches.**

Almost impossible to climb, made to last and competitively priced, Milan is **the perfectly beautiful choice for medium-security projects.**



Security Rating: MEDIUM

SECURITY SOLUTIONS

- Amusement Parks
- Botanical Gardens & Zoos
- Parks & Playgrounds
- Schools & Universities
- Parking Garages
- Public Spaces
- Hotels & Resorts
- Businesses & Corporations
- Apartment Complexes
- Residential Property

PANEL

Height		Length		Gauge	
in	in	cal.	mm		
62 15/16	87 3/8	4	6		
81 7/8	87 3/8	4	6		

Wire Breaking Load		Wire Tension Strength	
psi		lbs (min)	
55,000 - 70,000		2500	

Posts are available in multiple sizes and lengths. Please consult one of our Distributors for additional details.

INSTALLATION COMPONENTS



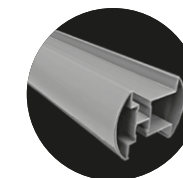
Round Lock Clamp



Square Lock Clamp

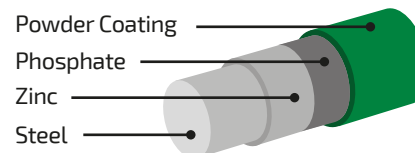


Single Clamp



Extruded Aluminum Posts

COMPOSITION



25-year limited warranty on all components | Meets ASTM-510

COLORS RAL CODES



CROWD CONTROL

Clearly a simple, effective barrier



CLEAR, see-through design

SIMPLE, modular assembly

EFFECTIVE SECURITY with exceptional stability



Address any crowd-security challenge, no matter how large or small, with confidence.

Our crowd-control panels are easy to transport, simple to assemble and are designed to stay in place, regardless of the surface. Plus, the interlocking, tubular steel frames and panels nest well for compact storage.



Security Rating: STANDARD

SECURITY SOLUTIONS

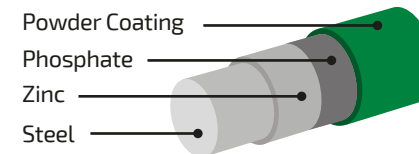
- Concerts
- Parades
- Events
- Construction Sites

SPECIFICATIONS

Height	Length	Opening	Weight	Gauge	
in	in	in	lbs	cal.	mm
48	79	2 x 8	35	6	4.89

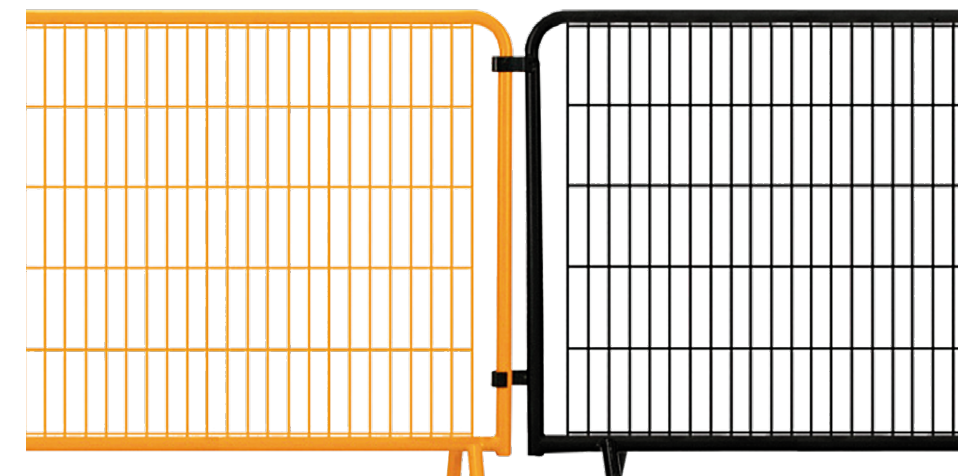
Horizontal Lines	Vertical Lines	Pipe Diameter
per panel	per panel	in
6	37	1.5

COMPOSITION

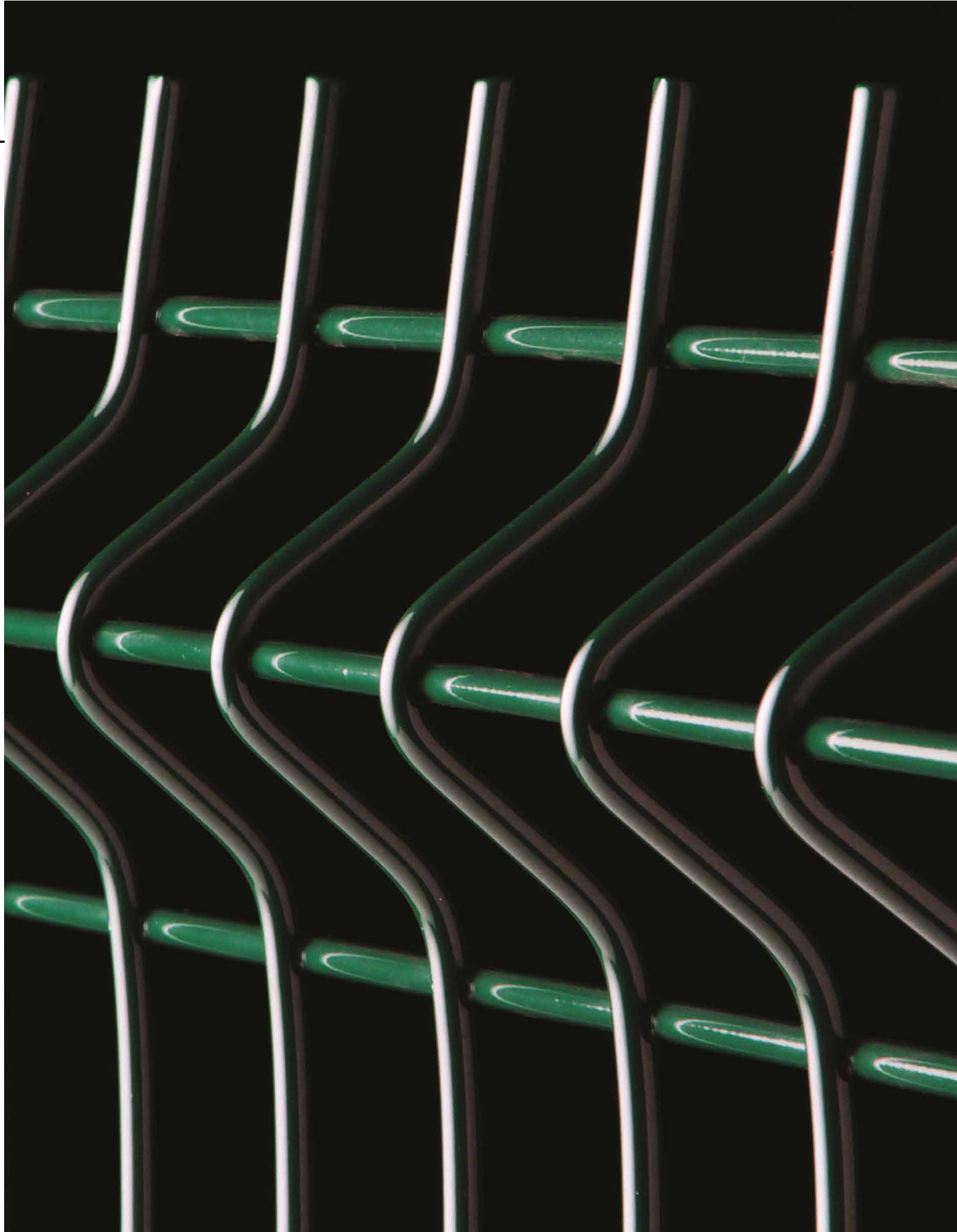
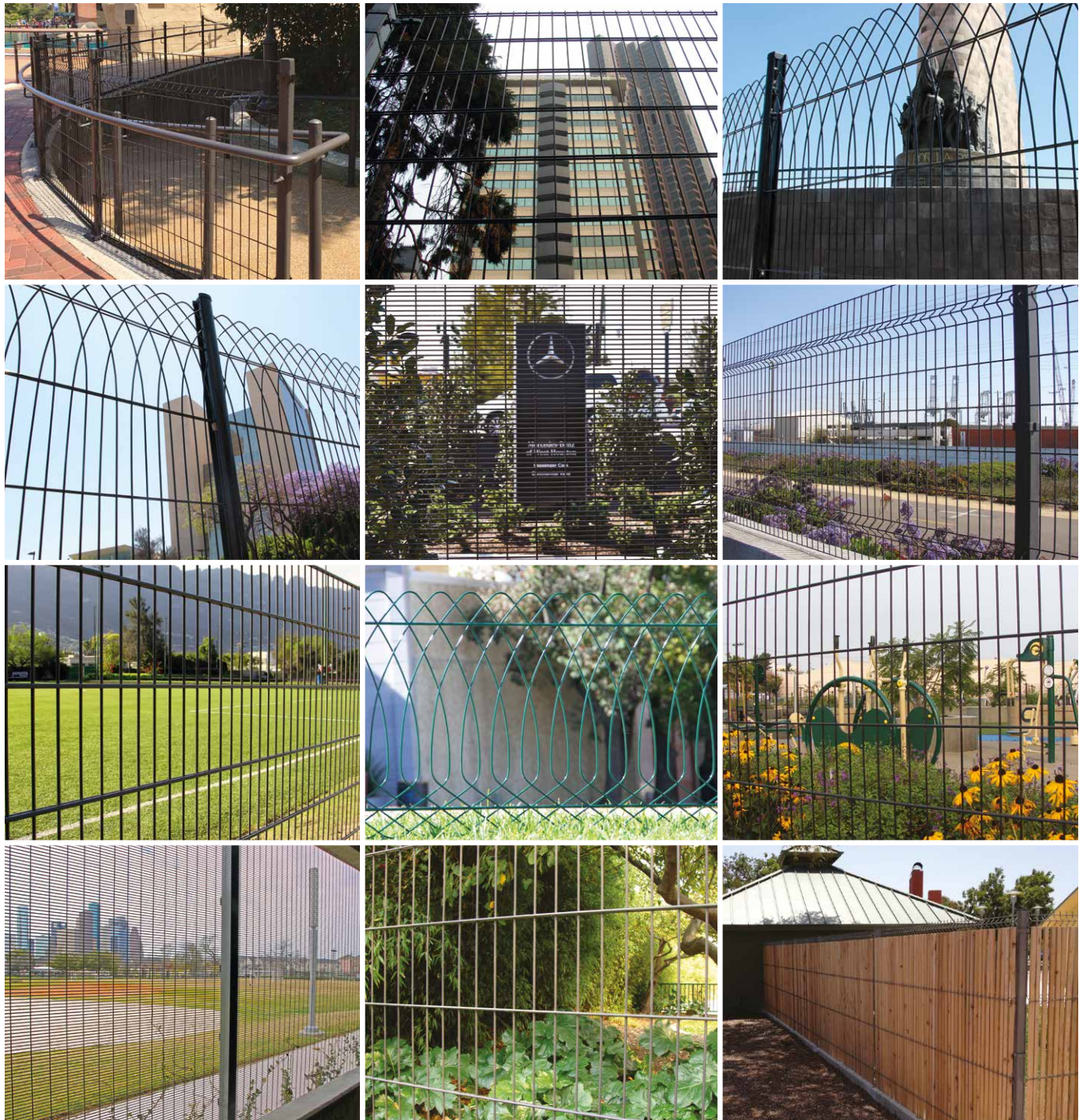


25-year limited warranty on all components | Meets ASTM-510

COLORS RAL CODES



Installations



 **Designmaster**[™]
FENCING SYSTEM



designmasterfence.com

 DMFdesignmasterfence

