

MILAN

Clearly a beautiful
perimeter
solution



CLEAR see-through design

BEAUTIFUL & SLEEK

no pinch-points

PERIMETER-PERFECT

aesthetics & security



For solutions that demand equal parts beauty and security, choose Milan's **steel panels, topped with horizontally-reinforced sleek arches.**

Almost impossible to climb, made to last and competitively priced, Milan is **the perfectly beautiful choice for medium-security projects.**



LEED Certified | Non-toxic Powder Coating | 25-year Limited Warranty



Security Rating: MEDIUM

PANEL

Height		Length		Gauge	
in	in	cal.	mm		
62 15/16	87 3/8	4	6		
81 7/8	87 3/8	4	6		

Wire Breaking Load	Wire Tension Strength
psi	lbs (min)
55,000 – 70,000	2500

Posts are available in multiple sizes and lengths.
Please consult one of our Distributors for additional details.

SECURITY SOLUTIONS

- Amusement Parks
- Botanical Gardens & Zoos
- Parks & Playgrounds
- Schools & Universities
- Parking Garages
- Public Spaces
- Hotels & Resorts
- Businesses & Corporations
- Apartment Complexes
- Residential Property

INSTALLATION COMPONENTS



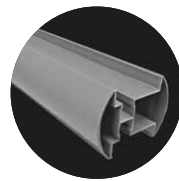
Round Lock Clamp



Square Lock Clamp



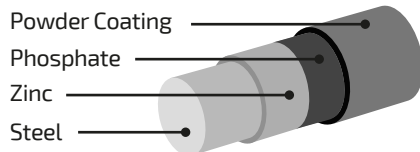
Single Clamp



Extruded Aluminum Posts



COMPOSITION



25-year limited warranty on all components | Meets ASTM-510

COLORS RAL CODES



Green
6005



Black
9004



Brown
7006



White
9010



Blue
5003



Yellow
1028



Red
3002



Grey
7037

